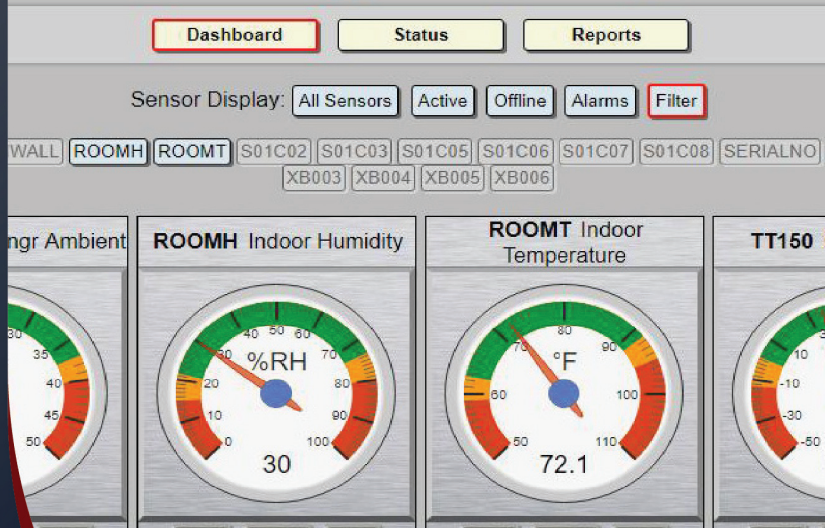


HAMPSHIRE



CONTROLS

*"Safeguarding
Your Precious
Biological
Materials"*



User	Contact	Email Address
		security@henchco.com

T° Sentry ALERT Monitoring System

PRODUCT DESCRIPTION:

The T° Sentry *ALERT* Monitoring System (AMS) is a feature rich, PC-based, SQL database logging and alarm notification program that interfaces to one or more Hampshire Controls' TT-150 & TT-200 Battery Operated Wi-Fi Temperature Transmitters and Alarms, MPS Multi-Probe Monitor/Alarms, or Model 140 Single Probe Temperature Monitor/Alarms.

The *ALERT* Monitoring System can log data from any probe sensing a physical parameter that outputs current or voltage including temperature, humidity, [CO₂], pressure, air flow, positional displacement, switch status, etc. Sensor data is stored to the SQL database at a programmable frequency.

The AMS provides intuitive, yet powerful, tools for network configuration, setting administrator and user login credentials; generating floor plans with icons depicting sensor locations and status; customizing sensor interface parameters including unit ID, sensor description, low and high alarms levels, alarm notification delays, logging frequency, email contact groups, and signal preprocessing including rate-of-change tolerance, signal averaging, offset, gain, and range validation; and formatting daily reports to include charts, statistical data, event logs, etc.

The T° Sentry *ALERT* System status page quickly displays the condition of all sensors in tabular form. Single or multiple sensors may also be visualized in tabular data logs, charts, dashboards, and gauge-like graphics, providing real-time, rapid visual sensor status in easily interpretable formats.

**Custom programming can
be provided to satisfy all
data display and logging
requirements.**



FEATURES:

- Data logging for temperature and other physical parameters (RH%, [CO₂], etc.), event logging, & alarm condition notifications
- Independent sensor channel configuration and monitoring
- Real-time data visualization in a variety of formats for single or multiple sensors
- Interactive floor plans showing sensor locations and real-time sensor status
- Email server settings, including contact groups and notification schedules
- Email and/or SMS text alerts for system startup, shutdown, power, login, communication failures, sensor alarm, and sensor power conditions
- Generation and distribution of reports at preferred frequencies with sensor readings, statistics, and logged sensor and system events
- Password protected authentication for restricted users (guests), limited users, and advanced users (administrators)
- Automated SQL database backup
- Remote access through any modern web browser

SPECIAL FEATURES:

- Provides remote access to sensor data, status, and reports via HTTP on any modern web browser
- Sends independently scheduled reports based upon work shift, organizational function, etc.
- Email commands to the *ALERT* Monitoring System to retrieve system or sensor status or to change settings
- Set sensor independent signal preprocessing, email alert lists, and alarm delays
- Status screen rapidly details sensor condition (on- or off-line, alarm condition, door status, power, etc.)

PO Box 516, Dover, NH 03821
U.S. Toll Free (866) 496-9424
Tel: (603) 749-9424
Fax (603) 749-9433
E-mail: sales@hampshirecontrols.com
www.hampshirecontrols.com



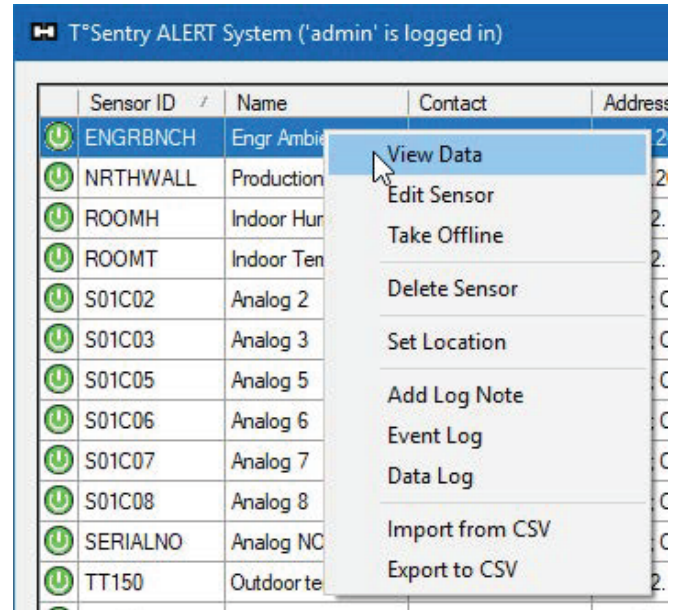
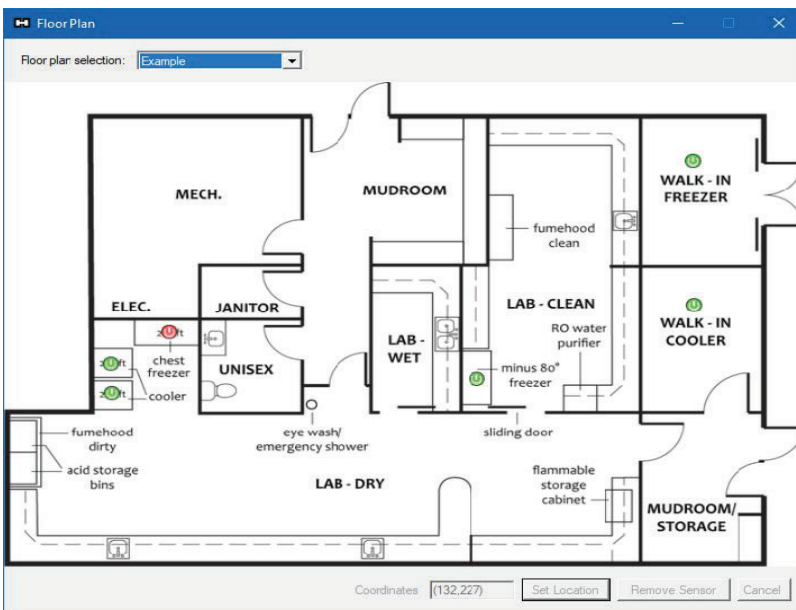
T° Sentry ALERT Monitoring System

The AMS is readily accessible remotely via HTTP for login, report generation, and observation of the current condition of the individual sensors as well as the overall system. Simply direct any modern web browser on your facility's network to the appropriate URL including either the T° Sentry ALERT Monitoring System's IP address or hostname. The AMS email client uses industry standard security protocols and is compatible with most email services including widely used Gmail and Outlook.

The AMS logs and sends conditional emails to configurable contact groups for critical system events including sensor alarm conditions, recovery from alarm condition, loss of power, system shutdown, and failed logins, etc. If alarm conditions are sustained for an extended period, the T° Sentry ALERT Monitoring System will continue to send emails at a programmable frequency until the alarm condition is cleared.

The T° Sentry ALERT Monitoring System data logging software allows you to meet state and federal compliance guidelines in research laboratories, medical and pharmaceutical laboratories, pharmaceutical manufacturing, and vaccine and biologic cold storage applications. The AMS software has been engineered to be used in virtually any application where continuous sensor monitoring, alarm indication, and process verification and documentation are required.

Hardware Requirements	
ALERT Monitoring System PC with Ethernet Jack	Standard modern PC with T° Sentry ALERT Monitoring System program connected to the target LAN or WAN
Hampshire Controls Monitoring System(s)	<ul style="list-style-type: none"> • T° Sentry TT-150/200 Wi-Fi Temperature Transmitters and Alarms • MPS Multi-Probe Monitor/Alarms with 10/100 Base-T Ethernet • T° Sentry Single Channel Model 140 Temperature Monitor/Alarms
Ethernet Jack (for MPS and Model 140)	Accessible to the MPS and/or Model 140 and connected to the target LAN or WAN



One-year warranty on all Hampshire Controls products.

About Us: Established in 1975, Hampshire Controls provides standard and custom-designed electronics to the biomedical and industrial markets. In addition to the T° Sentry ALERT Monitoring System, our product portfolio includes:

- T° Sentry Model 140 single probe temperature monitor/alarms
- TT-150/200 temperature & humidity Wi-Fi transmitters
- LD-215 Liquid Nitrogen Level Detector/Alarms
- Air Flow Monitors (50 to 2500 FPM)
- STEDIVOLT SV2005 Line Voltage Controls
- Customized OEM electronics design and manufacturing
- MPS Multi-Probe Monitor/Alarms
- CO₂, LN₂ CA5000 Freezer Backup Systems
- TC-12 TEMPHECK Rapid Response Thermometers
- ADM-215 Remote Alarm Delay Modules
- Customized monitoring, alarm notification, and logging

